



MobiAbility: A European standard on support measures in the EHEA for international students with disabilities

KA2 2016-1-ES01-KA203-025001

Workshop: "Erasmus+ Strategic Partnerships goes International Office"

M^a Ángeles Martínez and Miguel Á. Pérez



Erasmus+

UNIVERSIDAD DE
MURCIA

2nd of June 2017
Heidelberg, Germany



Erasmus+



At a glance

UNIVERSIDAD DE
MURCIA

KA2 2016-1-ES01-KA203-025001



Murcia City, founded by the Arabs in 825 AD is the Capital and main city (450,000 inhabitants). It is a services city and university town

• University of Murcia in figures



INFORMATION

5 Campus
27925 Undergraduate students
2360 Master's degree students
2413 PhD students
2412 Professors
1226 Administrative Staff



COURSES

56 Undergraduate programmes
78 Master's degree programmes
29 PhD programmes
44 Universidad del Mar Courses



RESEARCH

337 Research Groups
4 Research university institutes
1500 WOS paper / year
242 Read thesis
26 Patents
6 Technology-based Business

• The International Office

INTERNATIONAL WELCOME POINT

- Admission of International Students and Staff

MOBILITY

- Programmes for Mobility
- Erasmus, Isep, Latin America

PROJECTS AND COOPERATION

- Preparation and submission of project proposals
- Management of approved projects

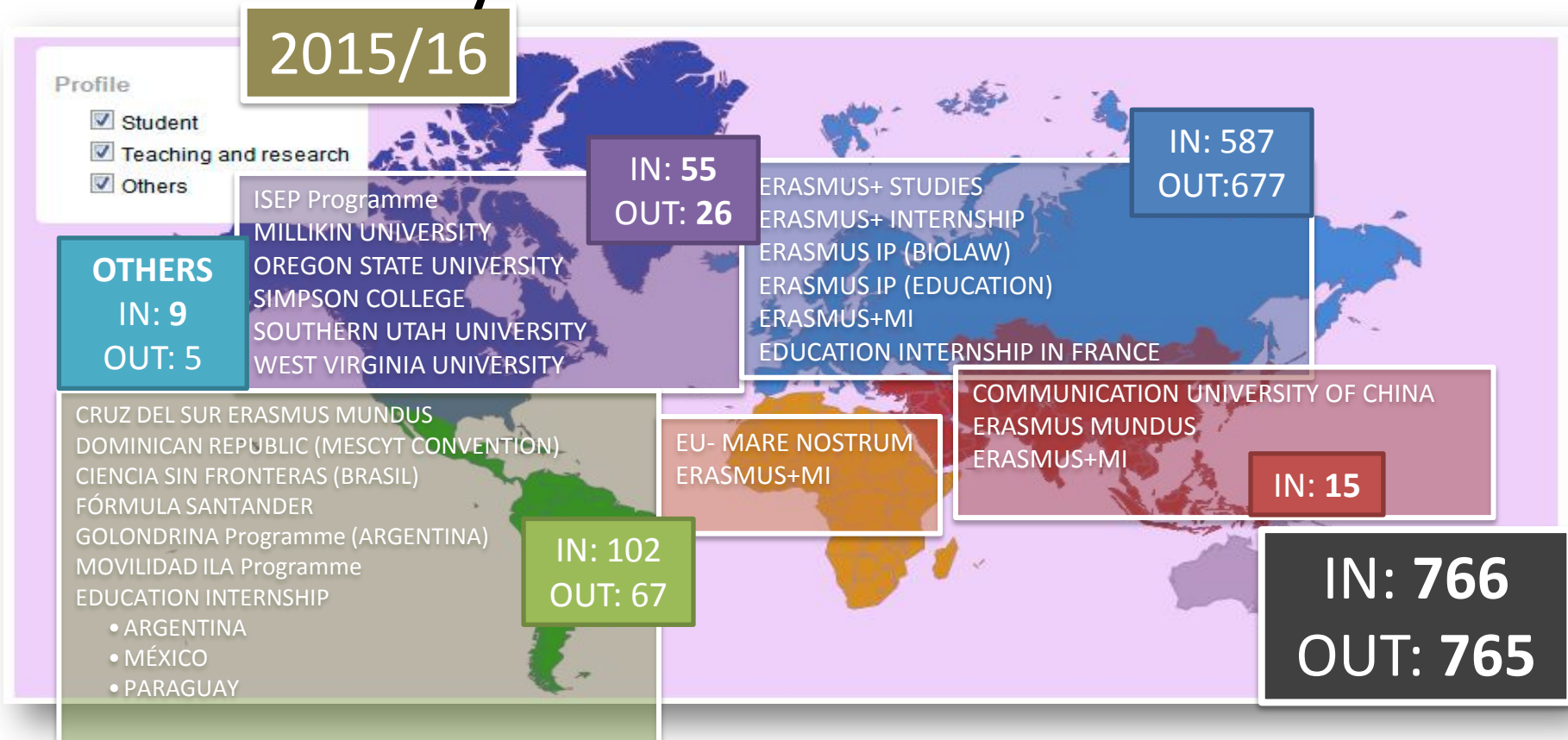
Our mission:

- Internationalization of the University of Murcia.
- Managing International Mobility and Projects.
- Supporting and favouring International Cooperation.
- Coordinating international and institutional actions.
- Organizing welcome activities for visitors.

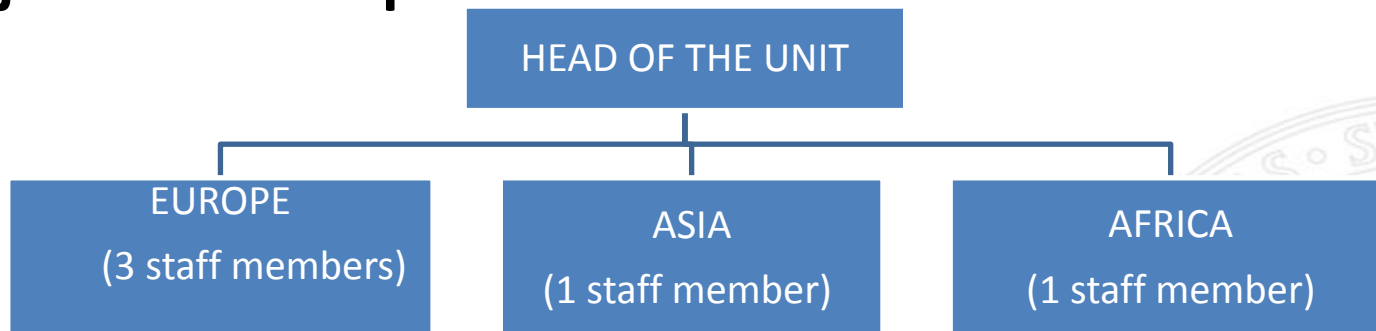
We have been working in the field of International Education for 30 years

KA2 2016-1-ES01-KA203-025001

• The University of Murcia in the World



- Projects and Cooperation



• Projects and Cooperation

| ERASMUS + | UMU COORDINATES |
|--|--|
| KA2 STRATEGIC PARTNERSHIPS | <p>MOBIABILITY: A European Standard on Support measures in the EHEA for international students with disabilities. 2016-1-ES01-KA203-025001</p> <p>REFUGIUM: building shelter cities and a new welcoming culture. Links between European universities and schools in Human Rights. 2016-1-ES01-KA203-025000</p> |
| KA2 CAPACITY BUILDING HIGHER EDUCATION | <p>ERASMUS + KA2 CBHE</p> <p>EXPERES: Les TICE appliquées à l'expérimentation scientifique</p> <p>561551-EPP-1-2015-1-ES-EPPKA2-CBHE-SP</p> |
| KA 107 | <p>BUDGET: 443.870 € (4th at national level)</p> <p>97 mobility grants</p> <p>Morocco, Taiwan, China, Indonesia, Malaysia, Thailand, Azerbaijan</p> |
| ERASMUS MUNDUS | <p>CRUZ DEL SUR - ENHANCING UNIVERSITY INTERNATIONALIZATION FOR COMPREHENSIVE DEVELOPMENT IN LATIN AMERICA</p> <p>551456-EM-1-2014-1-ES-ERA MUNDUS-EMA21</p> |
| JEAN MONET | <p>CULTURES OF SECURITY: NEW CHALLENGES FOR EUROPE</p> <p>564900-EPP-1-2015-ES-EPPJMO-MODULE</p> |

UMU is partner of 10 projects, in the frame of other programmes, as Erasmus + Sport and KA3



- Outgoing Erasmus Disability students and Staff
(period 2010-2017)**

2016/17: 10 students

2015/16: 4 students

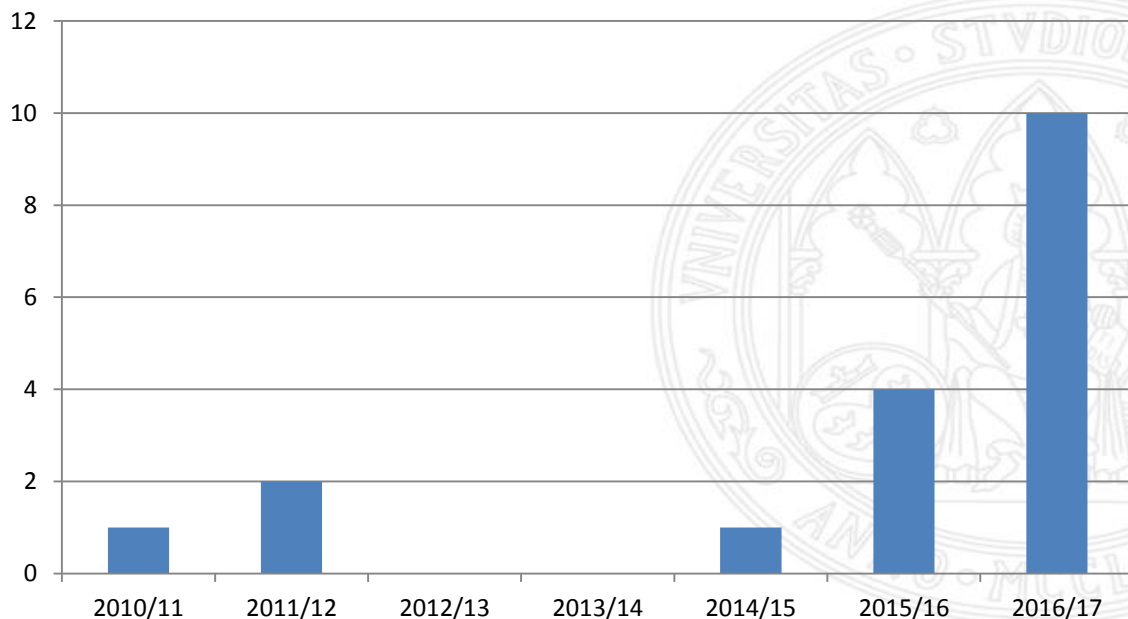
2014/15: 1 student

2013/14: 0

2012/13: 0

2011/12: 2 students

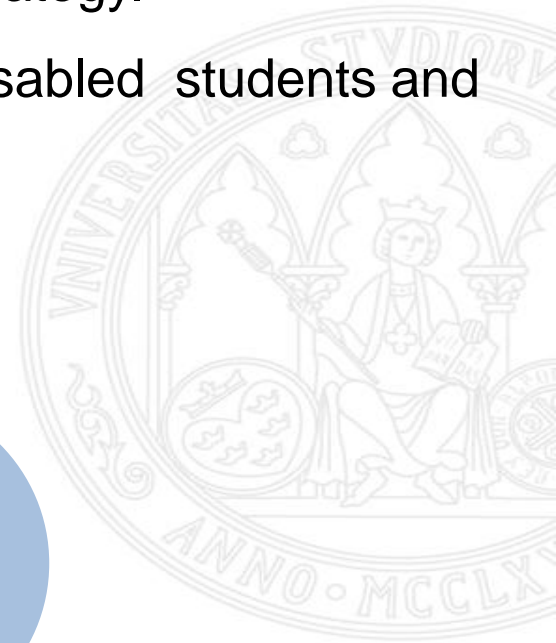
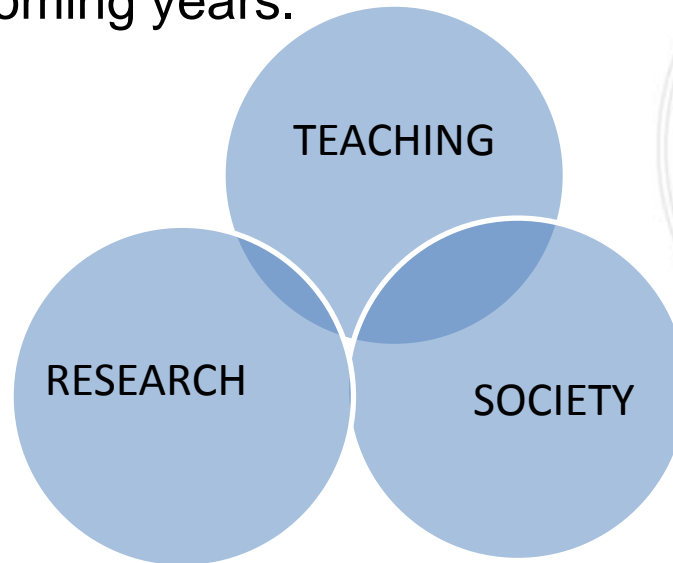
2010/11: 1 student





- **Our Internationalization Strategy**

- International Mobility is one of the pillars of our strategy.
- Significant Increase of mobility for international disabled students and staff is expected in the coming years.



***MobiAbility* project**

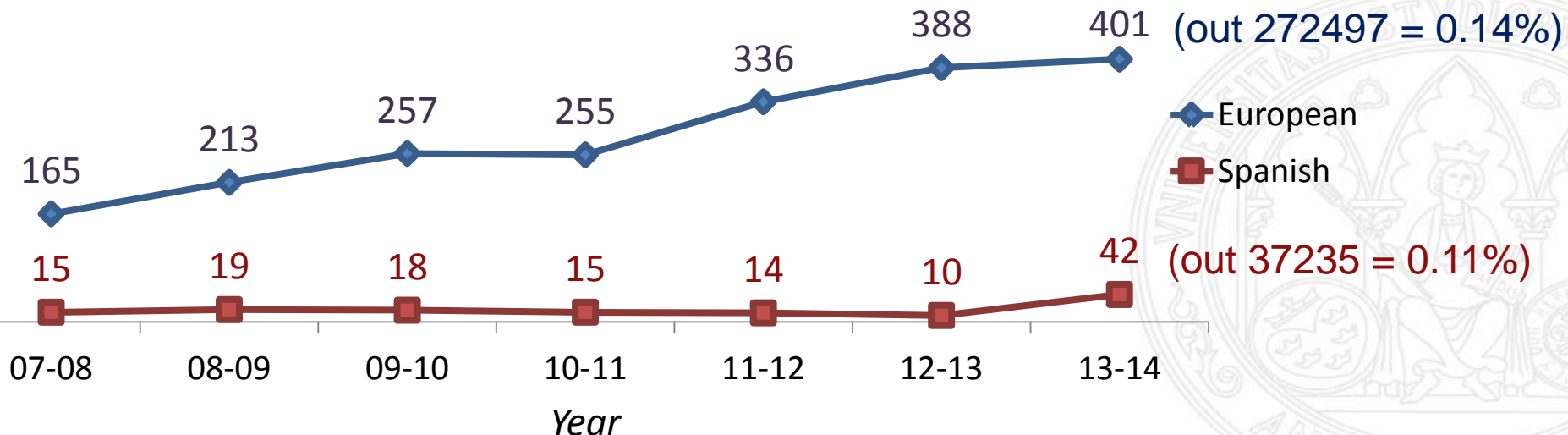


- Key Action 2: Cooperation for innovation and the exchange of good practices
 - Strategic Partnerships for Higher Education
- *MobiAbility: A European standard on support measures in the EHEA for international students with disabilities*
 - Most relevant horizontal priority: *Inclusive education, training and youth*
 - Background: Promoting the international mobility of people with disabilities contributes to their academic training and social inclusion.
- Duration: 36 months
- Applicant (coordinator): University of Murcia (PIC 999844282)

KA2 2016-1-ES01-KA203-025001

• Background

– Erasmus students with special needs



Sources:



- **Background**

- A clear disadvantage:

Evidence shows that students with low socio-economic background or students with disabilities are less likely to participate in mobility programmes (Hauschildt et al., 2015; King, Findlay and Ahrens, 2010; Souto Otero, 2008), further deepening their already disadvantaged position among their peers.

Source:

European Commission/EACEA/Eurydice, 2016. *Mobility Scoreboard: Higher Education Background Report*. Eurydice Report. Luxembourg: Publications Office of the European Union.



• Background

– Possible causes

- High costs (Insufficient support)
- Lack of general information on the host centre
- Lack of personalised monitoring
- Uncertainty on adaptations and accessibility
- Others: family overprotection, medical impediments, etc.



• Objectives

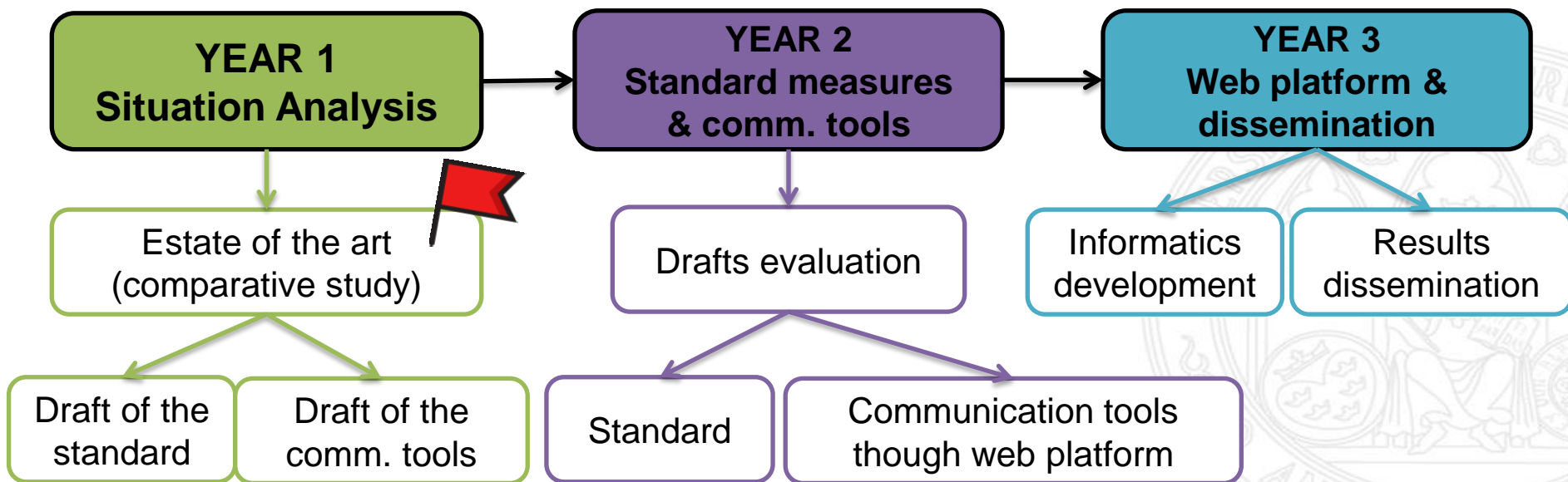


Intellectual outcome 1: A European standard of measures and reasonable accommodations at academic level for mobility students with disabilities



Intellectual outcome 2: An online and multilingual platform that house a catalog of universities meeting the standard, and some communication tools between attention-to-diversity services for a more personalized monitoring.

- **Work plan overview**



Partners



KA2 2016-1-ES01-KA203-025001

• Partner Institutions organisation

– Universities



• Partner Institutions organisation

– Foundations and NGOs

Madrid
Network of 1400 universities
Education and employment

**FUNDACIÓN
uni>ersia**



Fundación ONCE
para la Cooperación e Inclusión Social
de Personas con Discapacidad

Madrid
National and international reference
Education, employment and accessibility



Murcia
Federation of civil organizations
Individual and collective rights and interest

• Coordination



Management: Organizing Kick-off and transnational meetings. Transfer and management of the grant. Reporting to EACEA and Spanish National Agency.



Academic work

Team work and intellectual outcomes development.
Disseminations



Quality assurance system
(Commission led by UAIC)

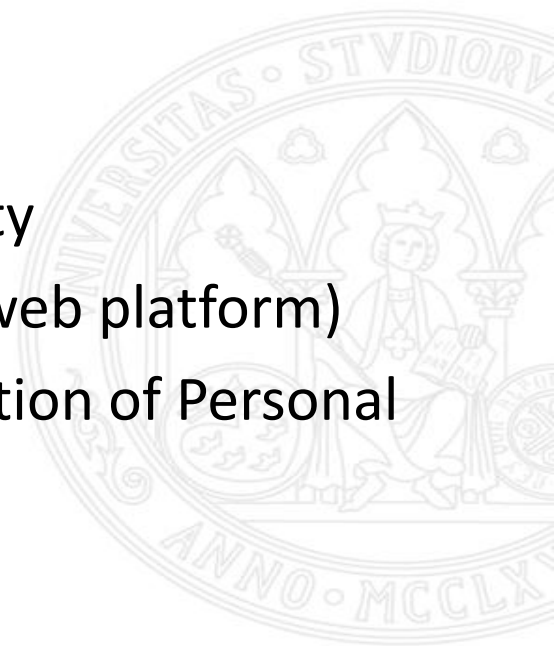
- Compliance with milestones and objectives
- Level of satisfaction
- Improvement actions



- **The UMU Team**

Working in synergy with other units

- University Service for Attention-to-Diversity
- Unit for Innovation (for the design of the web platform)
- Centre of Studies for Disability and Promotion of Personal Autonomy
- Observatory of Social Exclusion



• Methodology



Literature review



Surveys



Focus groups



Online work



Virtual meetings



Face-to-face meetings



Informatics developments



Translations

- **Partner Institutions organisation**



Outcomes





- **Objectives**



Intellectual outcome 1: A European standard of measures and reasonable accommodations at academic level for mobility students with disabilities



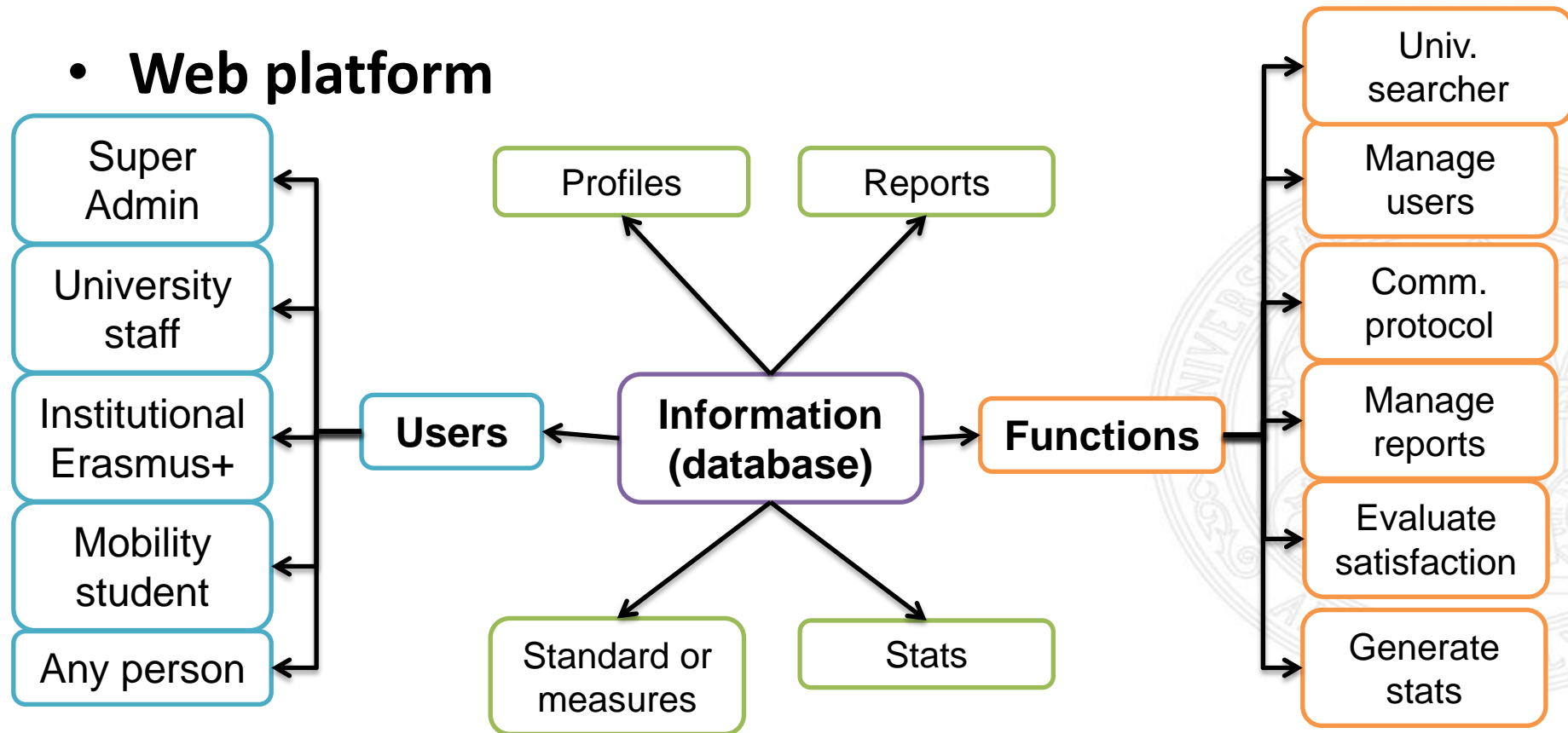
Intellectual outcome 2: An online and multilingual platform that house a catalog of universities meeting the standard, and some communication tools between attention-to-diversity services for a more personalized monitoring.

• Standard of measures (a hypothetical example)

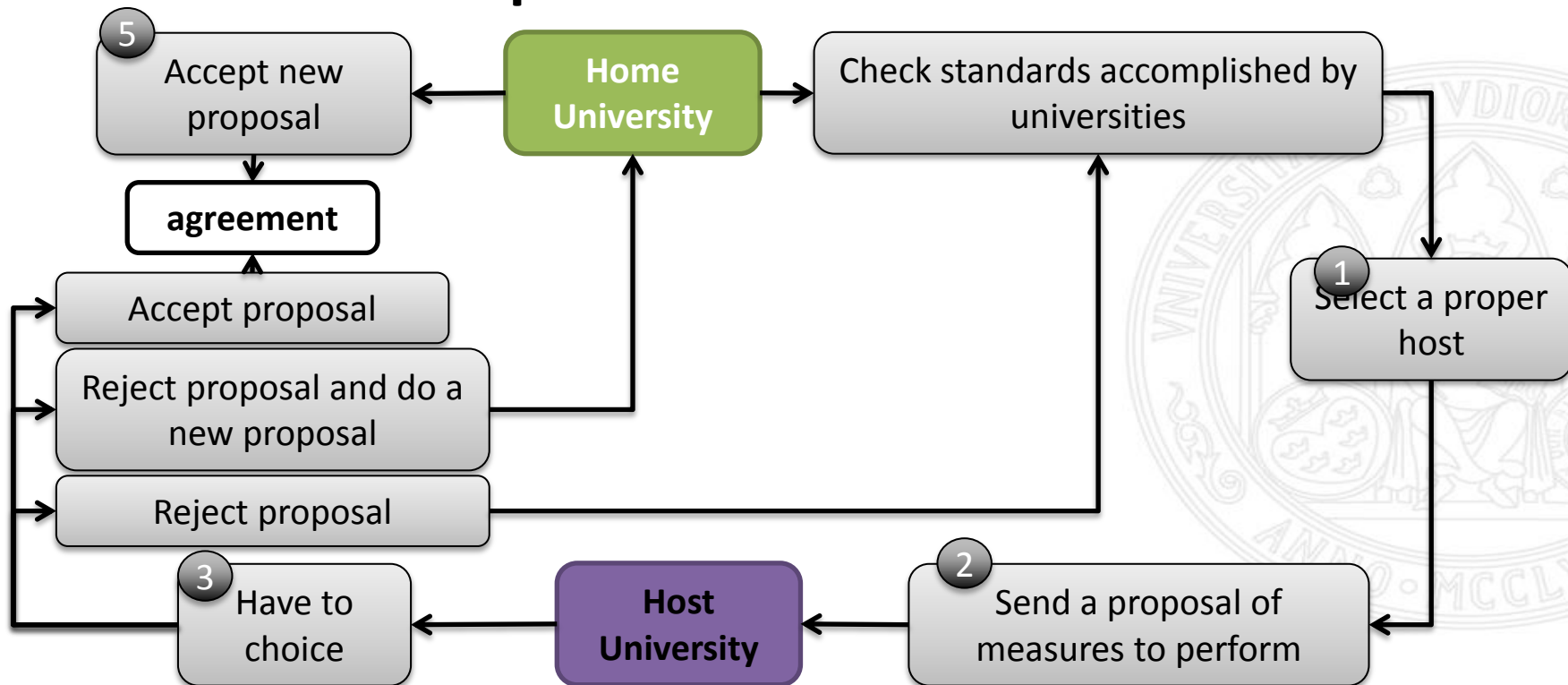
| Area of interest | Mandatory standard | Recommendations |
|---|--|---|
| Access and admission to university | <input type="checkbox"/> Information to new students with disabilities ... | <input type="checkbox"/> Welcome programmes ... |
| Staying and mobility in university | <input type="checkbox"/> Bilateral agreement concerning mobility students ... | <input type="checkbox"/> Special consideration for expelling causes ... |
| Accessibility to technological, instrumental or information resources | <input type="checkbox"/> Accessible website ... | <input type="checkbox"/> Teaching material adapted ... |
| Teaching-learning process: Support, and reasonable accommodations | <input type="checkbox"/> Language Sign Interpreter ... | <input type="checkbox"/> Psychological counseling ... |
| Evaluation and exams: Support, and reasonable accommodations. | <input type="checkbox"/> Extra time ... | <input type="checkbox"/> No penalty in spelling errors ... |
| Other programs/actions | <input type="checkbox"/> Services of dedicated staff <input type="checkbox"/> Staff training on disabilities ... | <input type="checkbox"/> Adapted residence halls <input type="checkbox"/> Tertiary studies fees ... |

KA2 2016-1-ES01-KA203-025001

• Web platform



• Communication protocol





+1M
people

• Transversal benefit



Students with disabilities
in the EHEA

- Promoting international mobility
- Better support and monitoring
- More and better information about



Attention-to-diversity Services,
International Offices, etc.

- Increasing quality of service
- More efficient service
- Proper distribution of roles
- Internationalization
- Innovation and good practices



Academics staff
Teaching innovation services



Politicians, institutions,
social organizations

- An standard to be considered
- Information about universities
- Helpful Online platform as a new support



Partner organization

• Use of results

- Public, for free and downloadable
- Translated to the main European languages
- Sent to European institutions and social organisations



Thank you very much for your attention!

maperez@um.es



International students welcome. University of Murcia, 2015