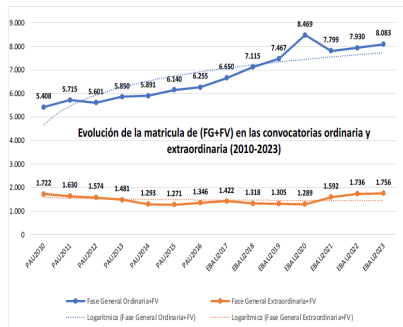


213 – DIBUJO TÉCNICO II ESTADÍSTICAS DE LA MATERIA (actualizado a 31/07/2023)

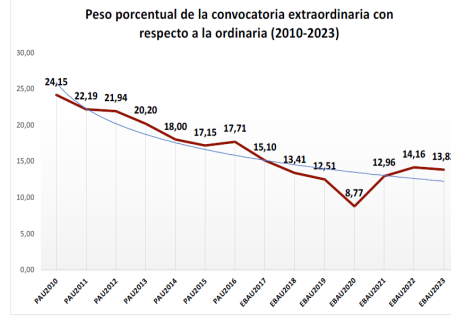
1. Datos globales de EBAU

| MATERIAS | ORDINARIA | | | | EXTRAORDINARIA | | | |
|--|-----------|-------|---------|-------|----------------|-------|---------|-------|
| | Present. | Aptos | % Aptos | Media | Present. | Aptos | % Aptos | Media |
| 201- LENGUA CASTELLANA Y LITERATURA II | 7.559 | 6.293 | 83,25 | 6,89 | 1189 | 716 | 60,22 | 5,30 |
| 202- HISTORIA DE ESPAÑA | 7.557 | 6.416 | 84,90 | 7,41 | 1182 | 675 | 57,11 | 5,46 |
| 203- INGLÉS | 7.447 | 6.300 | 84,60 | 7,03 | 1169 | 749 | 64,07 | 5,73 |
| 204- FRANCÉS | 517 | 494 | 95,55 | 7,59 | 54 | 45 | 83,33 | 6,18 |
| 205- ALEMÁN | 22 | 8 | 36,36 | 7,61 | 5 | 4 | 80,00 | 8,06 |
| 206- MATEMÁTICAS II | 4.232 | 3.218 | 76,04 | 6,83 | 830 | 440 | 53,01 | 5,25 |
| 207- MAT. APLICADAS A LAS CIENCIAS SOCIALES II | 3.054 | 2.060 | 67,45 | 5,90 | 567 | 197 | 34,74 | 3,76 |
| 208- LATÍN II | 636 | 522 | 82,08 | 6,94 | 111 | 59 | 53,15 | 4,97 |
| 209- FUNDAMENTOS DE ARTE II | 283 | 257 | 90,81 | 7,65 | 56 | 46 | 82,14 | 6,31 |
| 210- ARTES ESCÉNICAS | 30 | 24 | 80,00 | 6,58 | 1 | 1 | 100,00 | 6,50 |
| 211- BILOGÍA | 1.935 | 1.354 | 69,97 | 6,57 | 304 | 164 | 53,95 | 5,16 |
| 212- CULTURA AUDIOVISUAL II | 1.148 | 969 | 84,41 | 7,33 | 206 | 177 | 85,92 | 6,95 |
| 213- DIBUJO TÉCNICO II | 1.019 | 939 | 92,15 | 8,32 | 94 | 67 | 71,28 | 6,81 |
| 214- DISEÑO | 149 | 125 | 83,89 | 6,67 | 28 | 23 | 82,14 | 6,10 |
| 215- ECONOMÍA DE LA EMPRESA | 2.090 | 1.792 | 85,74 | 6,98 | 300 | 152 | 50,67 | 4,77 |
| 216- FÍSICA | 1.195 | 726 | 60,75 | 5,42 | 114 | 65 | 57,02 | 5,27 |
| 217- GEOGRAFÍA | 1.037 | 887 | 85,54 | 7,44 | 155 | 113 | 72,90 | 5,84 |
| 218- GEOLOGÍA | 20 | 18 | 90,00 | 8,28 | 2 | 2 | 100,00 | 8,15 |
| 219- GRIEGO II | 261 | 231 | 88,51 | 7,57 | 33 | 22 | 66,67 | 5,36 |
| 220- HISTORIA DE LA FILOSOFÍA | 1.027 | 849 | 82,67 | 7,16 | 136 | 75 | 55,15 | 5,23 |
| 221- HISTORIA DEL ARTE | 114 | 70 | 61,40 | 5,64 | 13 | 7 | 53,85 | 3,72 |
| 222- QUÍMICA | 2.915 | 2.144 | 73,55 | 6,43 | 603 | 461 | 76,45 | 6,29 |
| 223- ITALIANO | 10 | 9 | 90,00 | 8,21 | 2 | 2 | 100,00 | 9,33 |

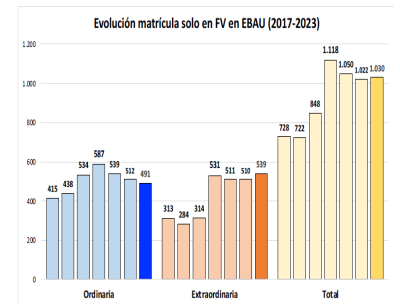
Evolución matrícula EBAU 2010/2023



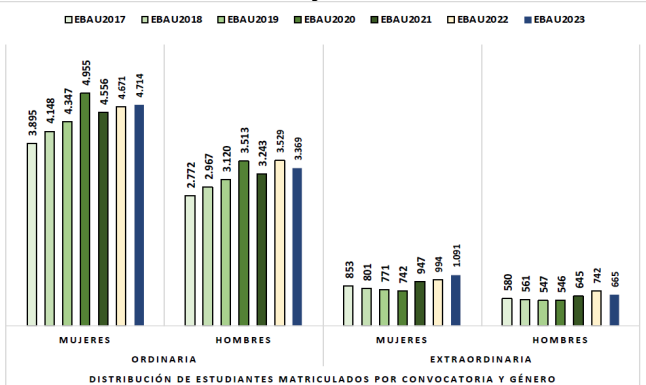
Ratio ordinaria/extraordinaria



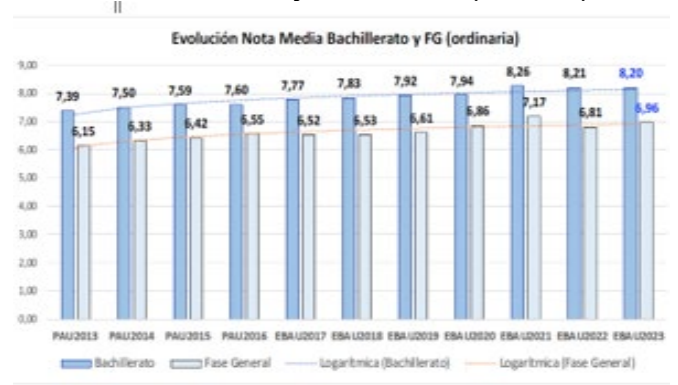
Matrícula Fase Voluntaria



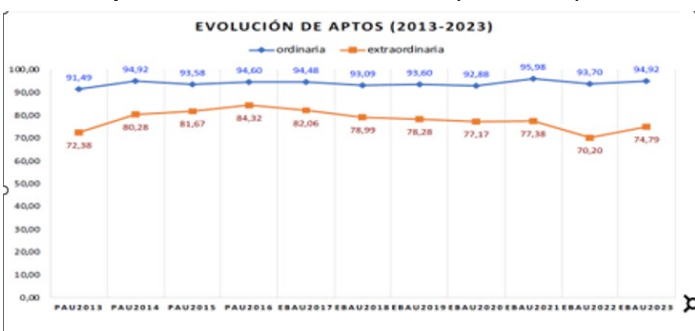
Hombres/mujeres 2017/2023



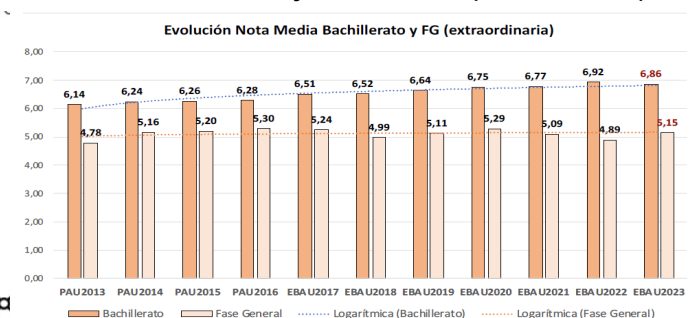
Nota Media Bachillerato y Fase General (ordinaria)



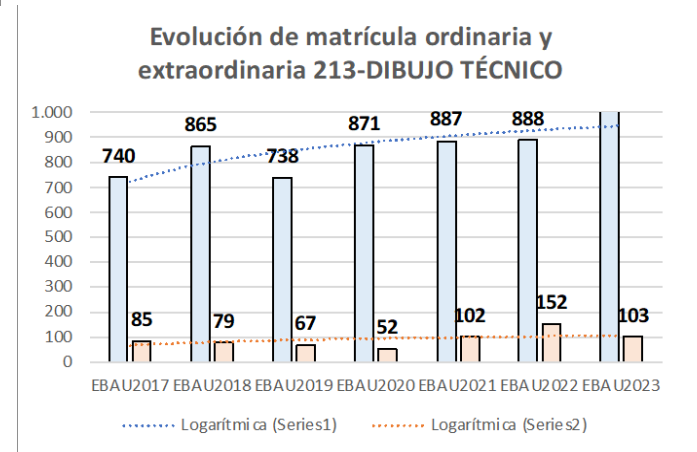
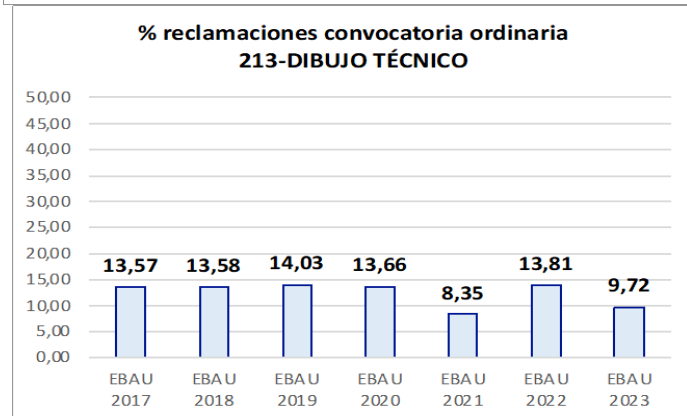
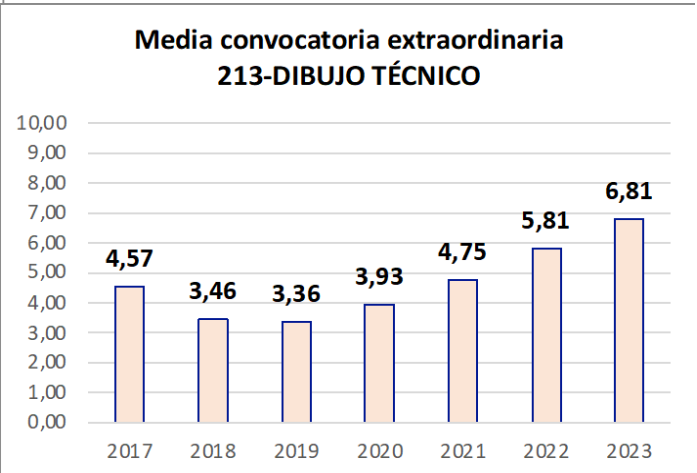
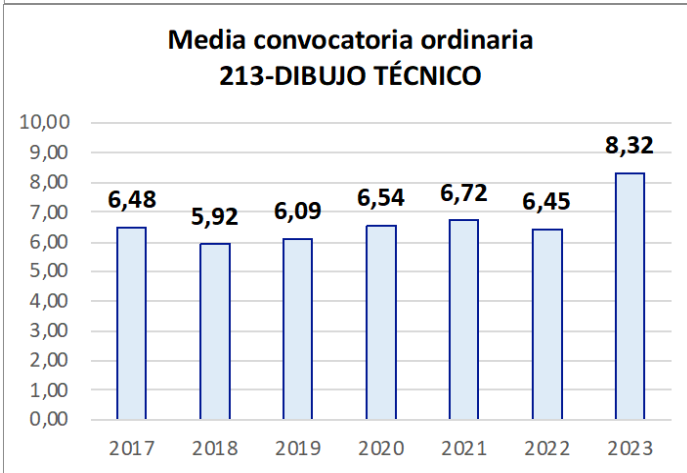
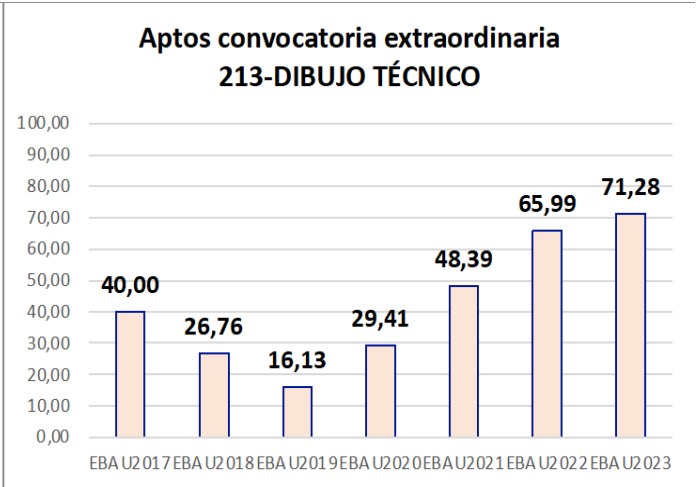
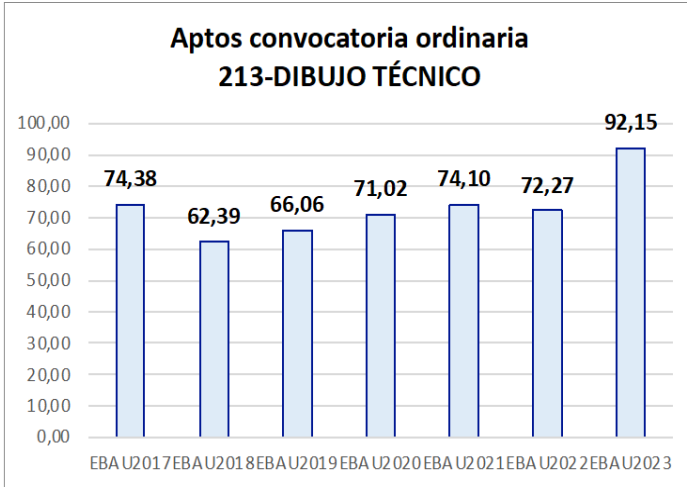
Aptos Ordinaria/Extraordinaria (2013/2023)



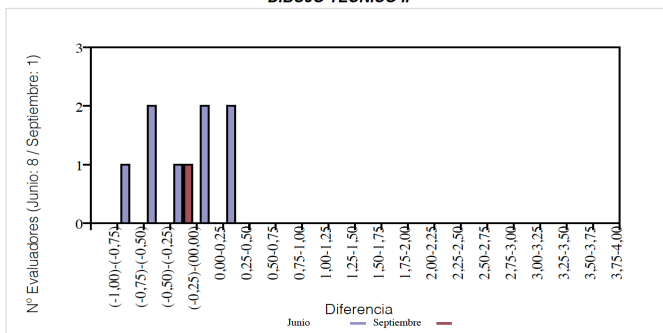
Nota Media Bachillerato y Fase General (extraordinaria)



2. Datos de la materia



DIBUJO TÉCNICO II



EBAU2023
Nº evaluadores (junio:8/julio:1)